



Model: V100EEX

A line of pneumatic valve positioners incorporating over sixty years of design, manufacturing and marketing expertise, creating one of the most durable, reliable instruments on the market.

This positioner can be ordered with either European or US certification on the IP converter thus allowing it to be used in hazardous locations. Certificates from CSA, FM and ATEX are available.

Accessories in the way of gauges, feedback modules or a raised indicator can be added in a matter of minutes.

Maximum modularity equals maximum flexibility and with a simple design and quality components, the performance is a maximum as well.

Input Signal

4-20 mA (Ri<250 ohms)

Supply Pressure

0.15 - 0.7MPa (20 - 100 PSI)

Linearity Error

<1.0% FS

Hysteresis

<0.6% FS

Repeatability

<0.5% FS

Pressure Gain

@ 600KPa (87PSI) according to ISA S75.13

750 Pout/Pin 49% Pout/Pin

Air Capacity

@ 200KPa (29PSI) 270SLM 9.5SCFM

@ 600KPa (87PSI) 800SLM 28.3SCFM

@ 1MPa (145PSI) 1350SLM 47.1SCFM

Bleed Rate

@ 200KPa (29PSI) 5.7SLM 0.2SCFM

@ 600KPa (87PSI) 17SLM 0.6SCFM

@ 1MPa (145PSI) 28.3SLM 1.0SCFM

Temperature Range

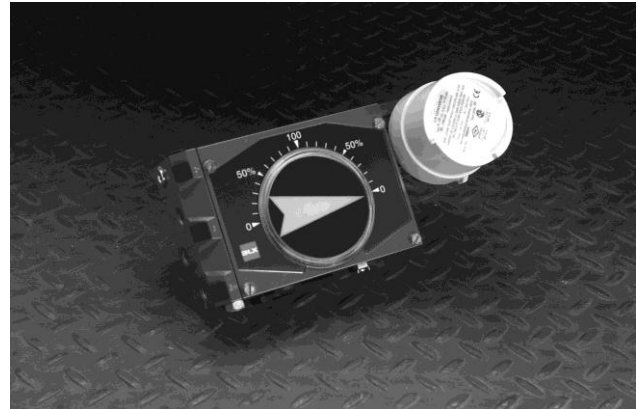
Depending on electrical rating

-40 to +85 Celsius (-40 to +185 Fahrenheit)

Simple calibration. With the non-interactive zero and span adjustment and the external zero adjustment, calibration is simple and time saving.

Flexibility. One housing for pneumatic or electro-pneumatic. The IP can be installed or removed at any time. Multiple mounting capability. Standard indicator allows for air to open or air to close operation. Flat or raised indicator available. F05 standard housing with changeable drives.

EXPLOSION PROOF POSITIONER



Thread sizes

Air connections	1/4" G Optional 1/4" NPT
Electrical entry	M20 Optional 1/2" NPT or PG13.5
Gauge ports	1/8" G Optional 1/8" NPT

Ingress Protection

IP66 (NEMA 4X)

Surface Finish

Powder Polyester

Weight

2.2Kg (4.9lbs)

Options

Various Spindles for different actuators

Various cams

Gauges

Feedback modules

Indicators

Certification

FM

Non-Incendive: CL I / DIV 2 / Grp A B C

Ex proof: CL I / DIV1 / Grp B C D; CL I-II-III / DIV1 / Grp E F G

CSA

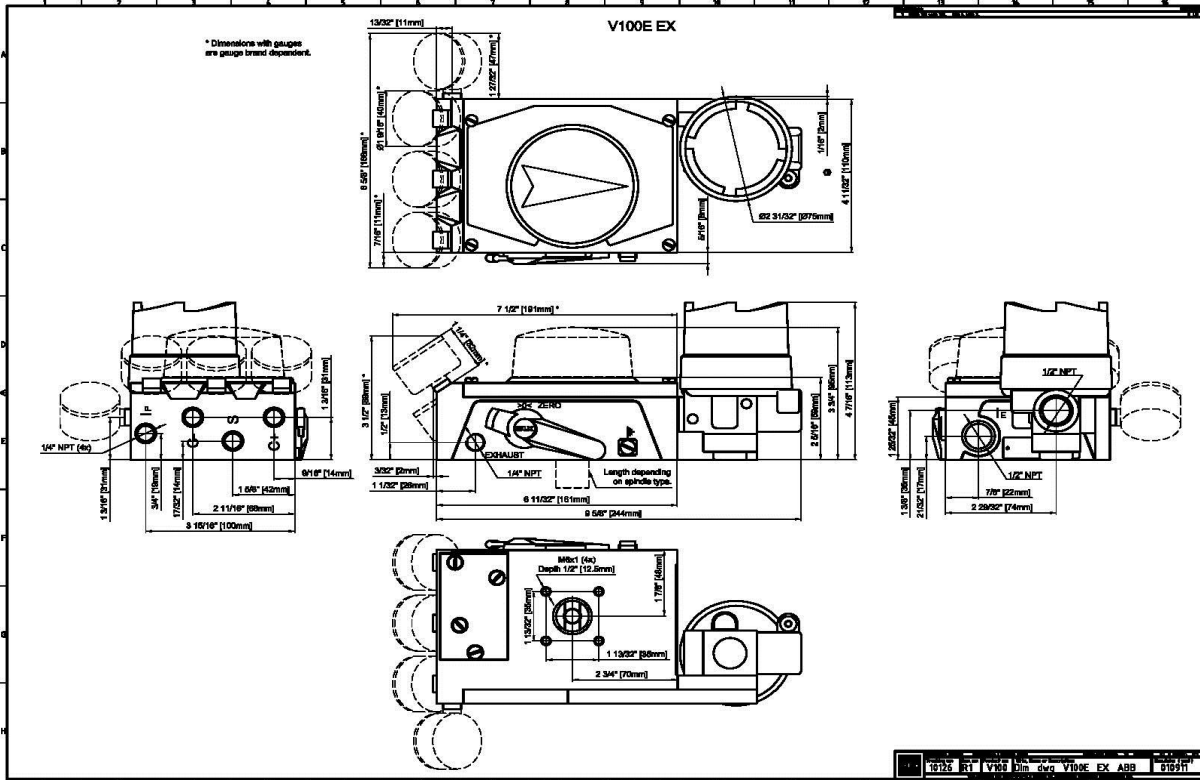
CL 1 DIV 1 Grp B C D; CL 11 / DIV 1 Grp EFG

ATEX

II 1G Eex d IIC T4-6

Maintenance friendly. The pilot valve assembly can be cleaned by removing one screw and can only be installed one way - the correct way. The gauge block is standard. IP test point positioner loop testing.

Durable. Cast aluminium, polyester coated housing. Stainless steel retained fasteners. Double locked stainless steel cam. Quality internal parts. Unique electrical compartment fitted with an o-ring is pressure sealed by the cover.



Ordering codes

Positioner	Threads	Drive	Front Cover	Indicator	Cam
V100EEX					
1/4G / M20 NPT / NPT (others available)	GM NN	D1 D2 D8	90 60 45 30 0	A B	C1 C3
	Rotary Namur Long Linear Short Linear (others available)	90 degree 60 degree 45 degree 30 degree blank	Flat Arrow Raised	Linear 90/180 deg Linear 30/60 deg (others available)	

The ordering code should be appended with either ATEX (for European) or US (for American) certifications.